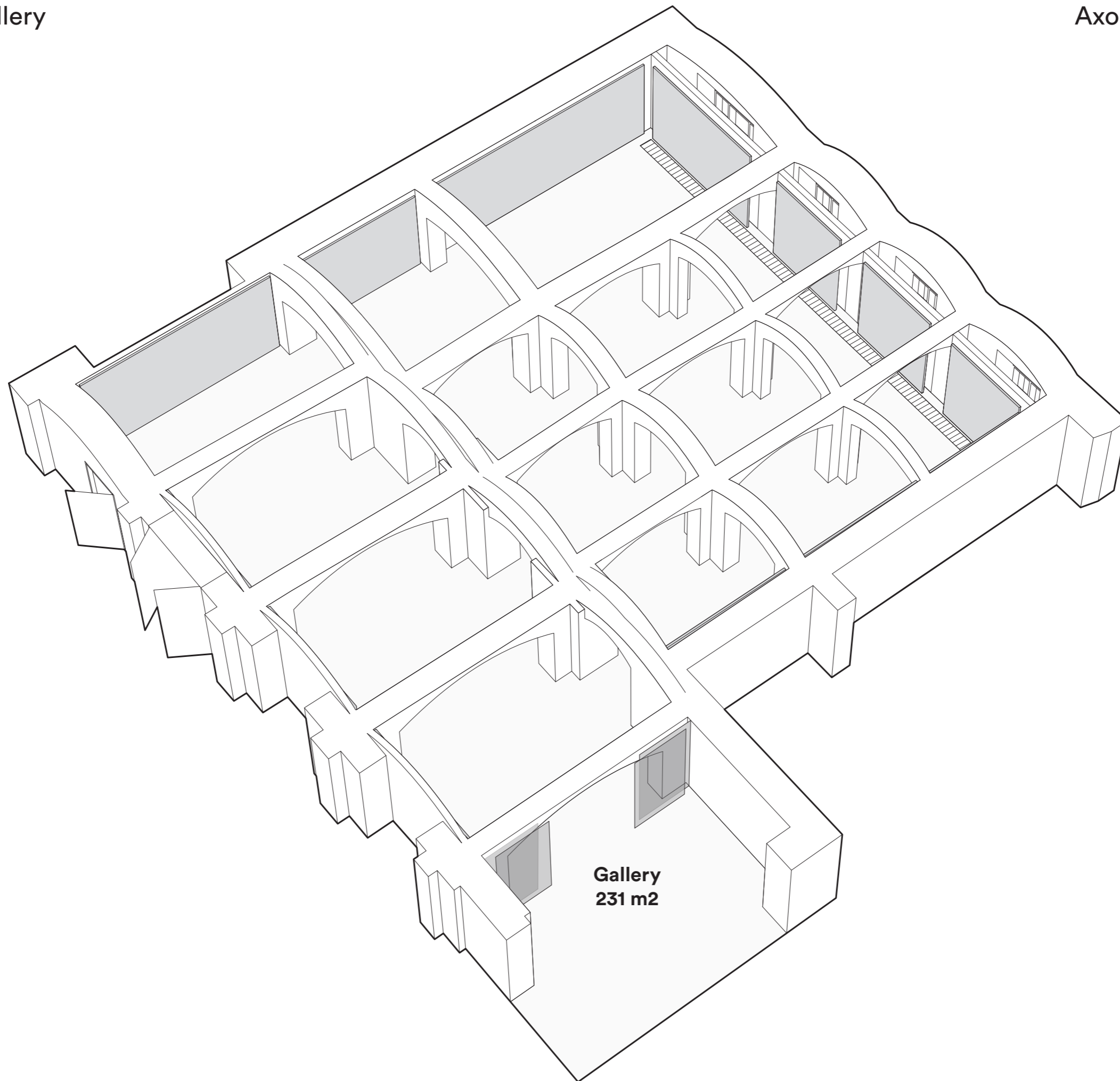


# DESIGNMUSEO GALLERY

This document is for schematic design only. All the production measurements to be checked on site!



**Gallery  
231 m2**

# Gallery / 231 m<sup>2</sup>

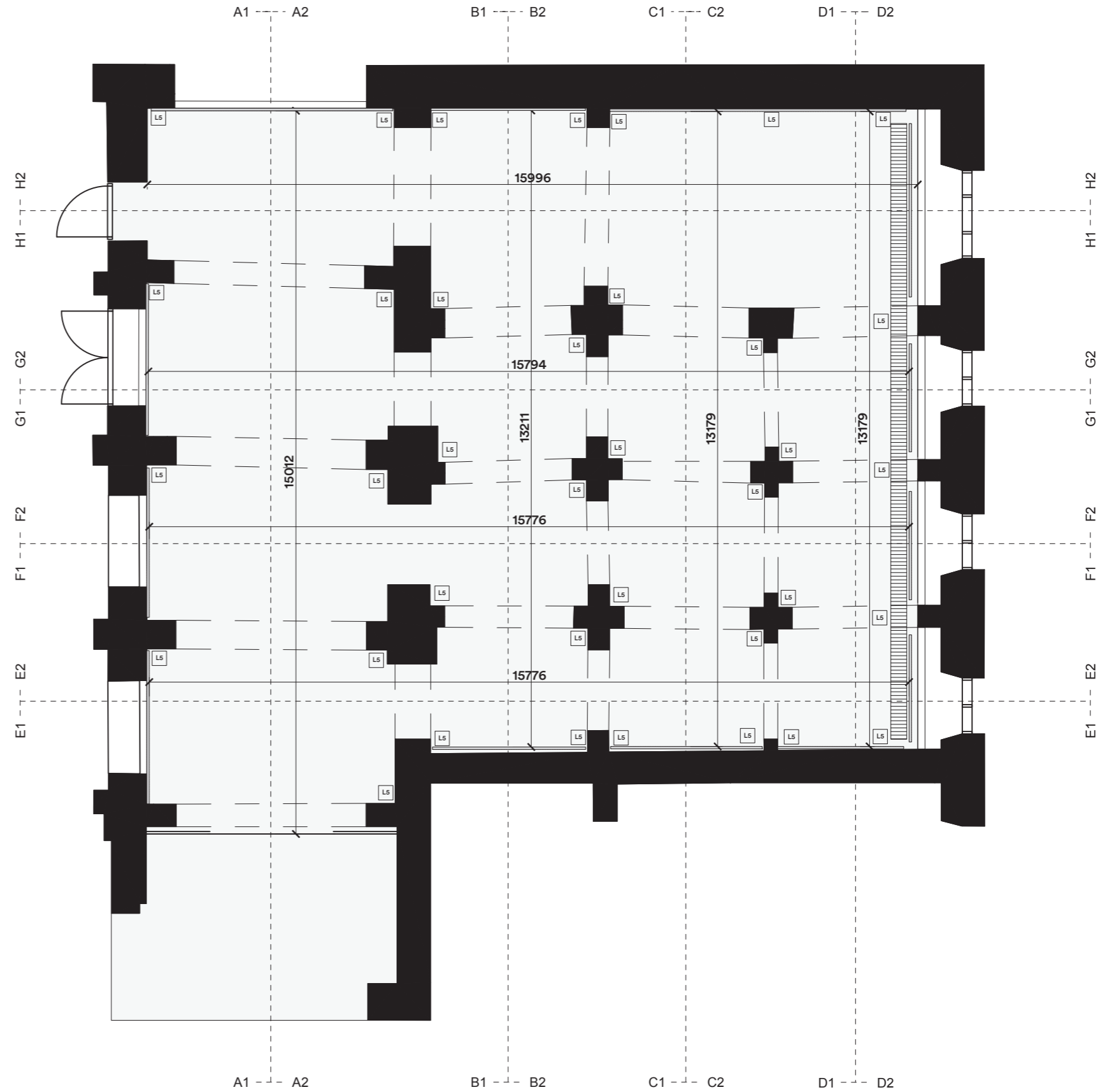
Brick wall: Untainted white

Wall element: MDF (10mm) + wooden frame, Untainted white

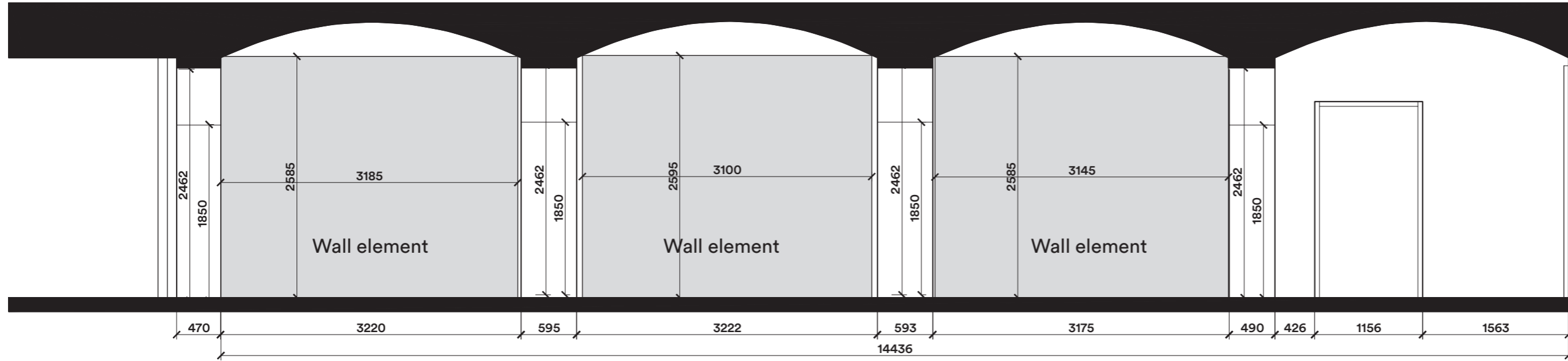
Floor: Wooden floor laminate, light grey

Ceiling: Untainted white

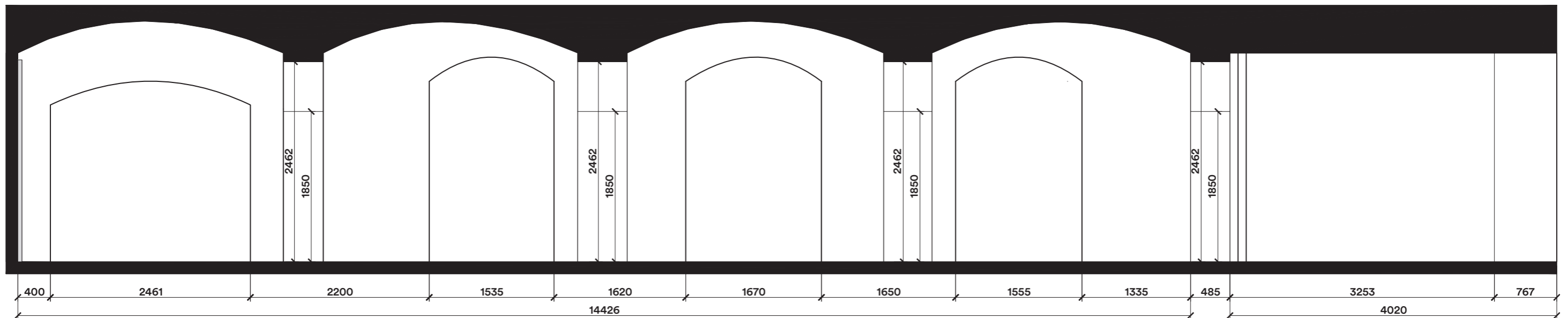
L5: Electrical Floor Sockets



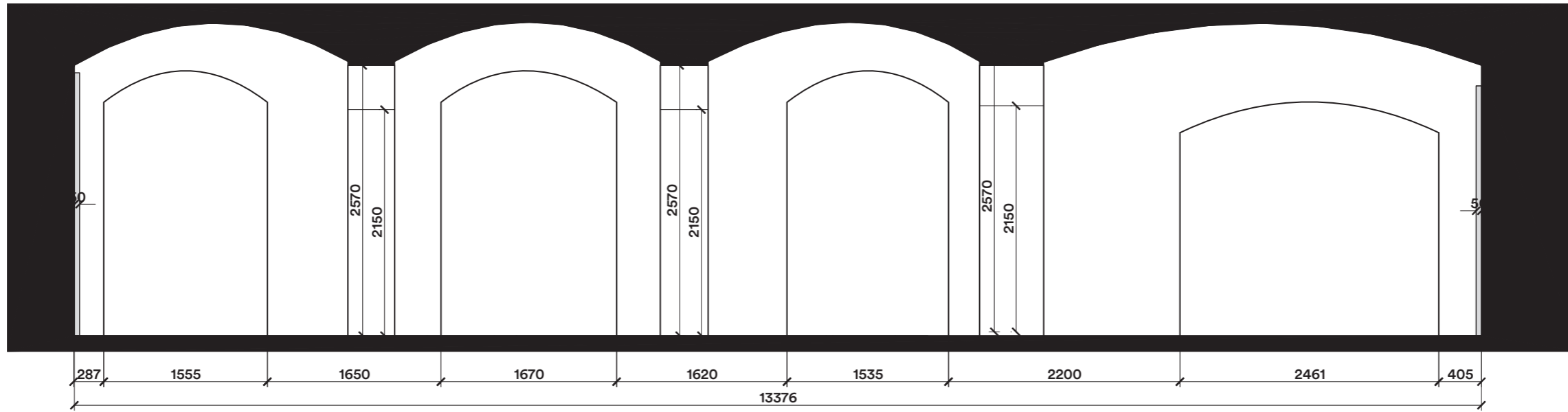
A1 -A1



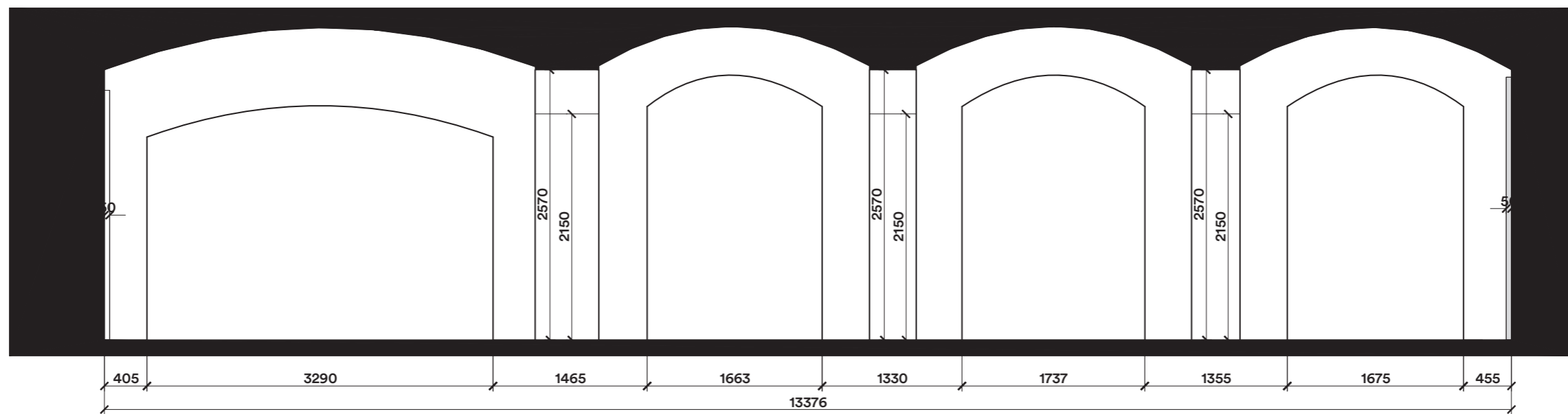
A2-A2



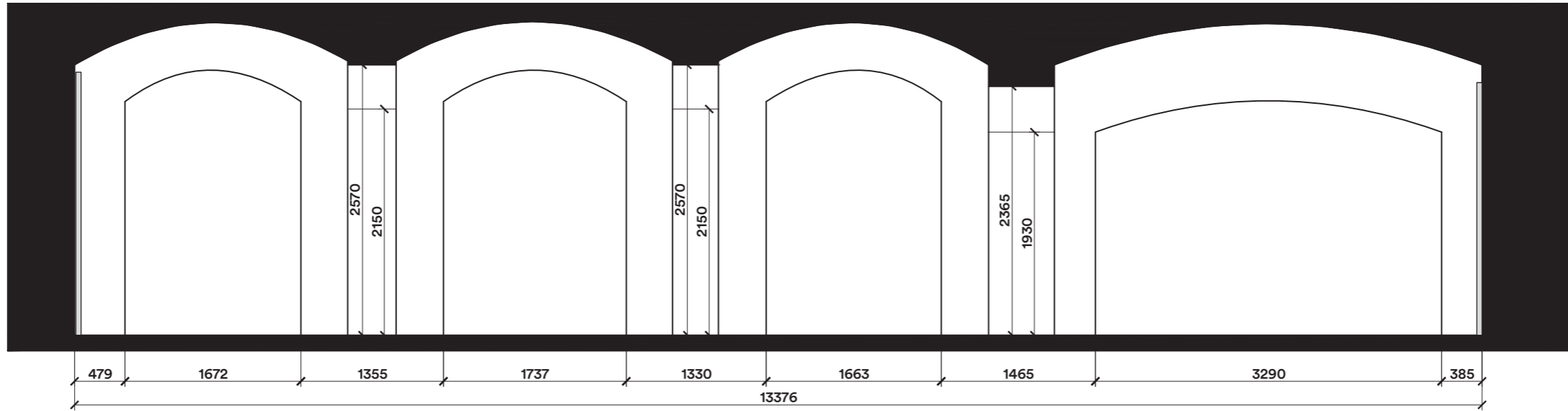
**B1-B1**



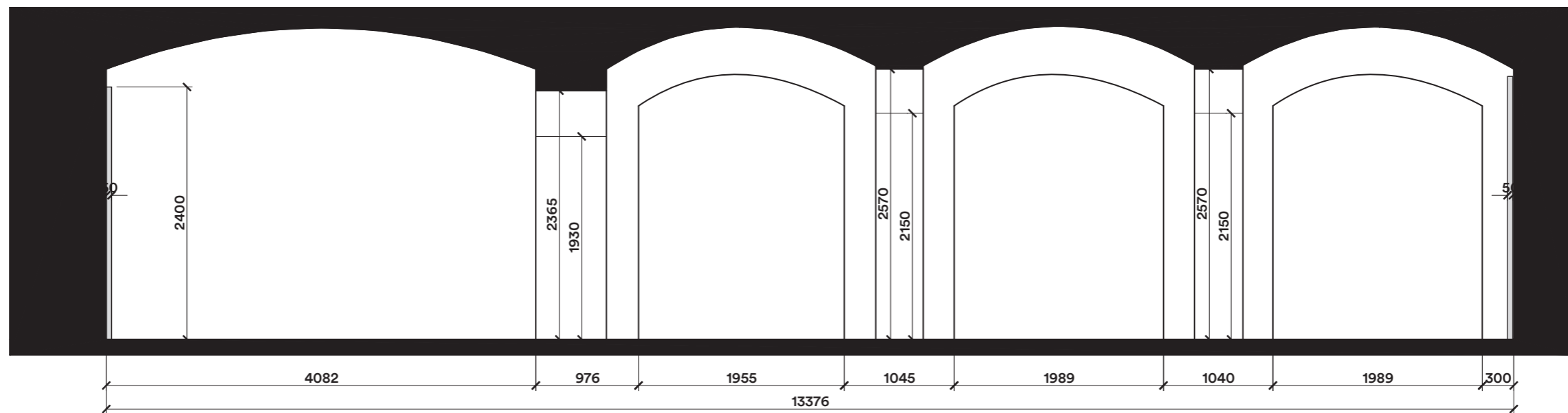
**B2-B2**



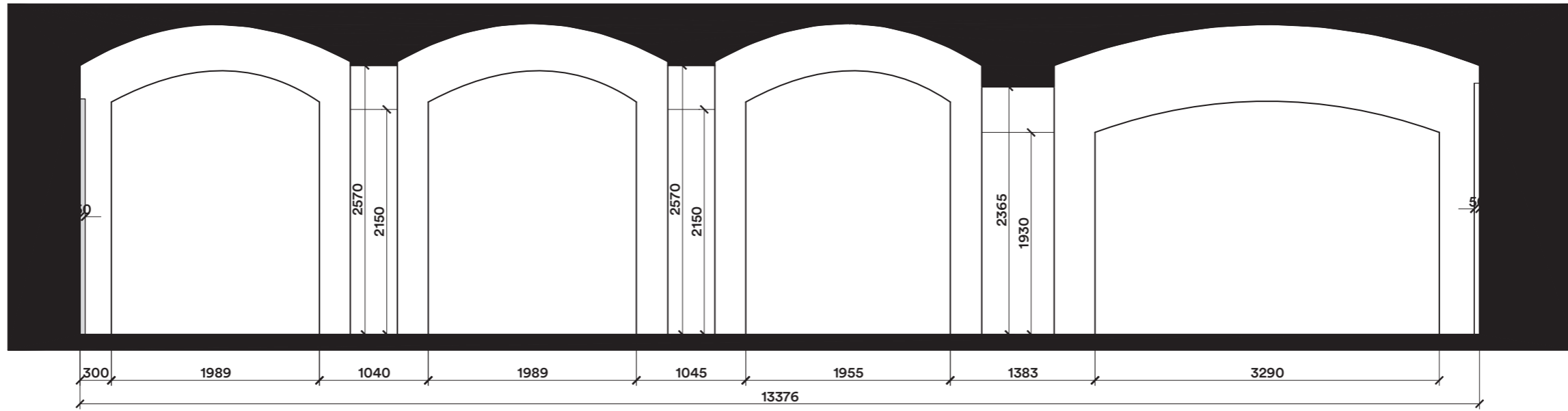
C1-C1



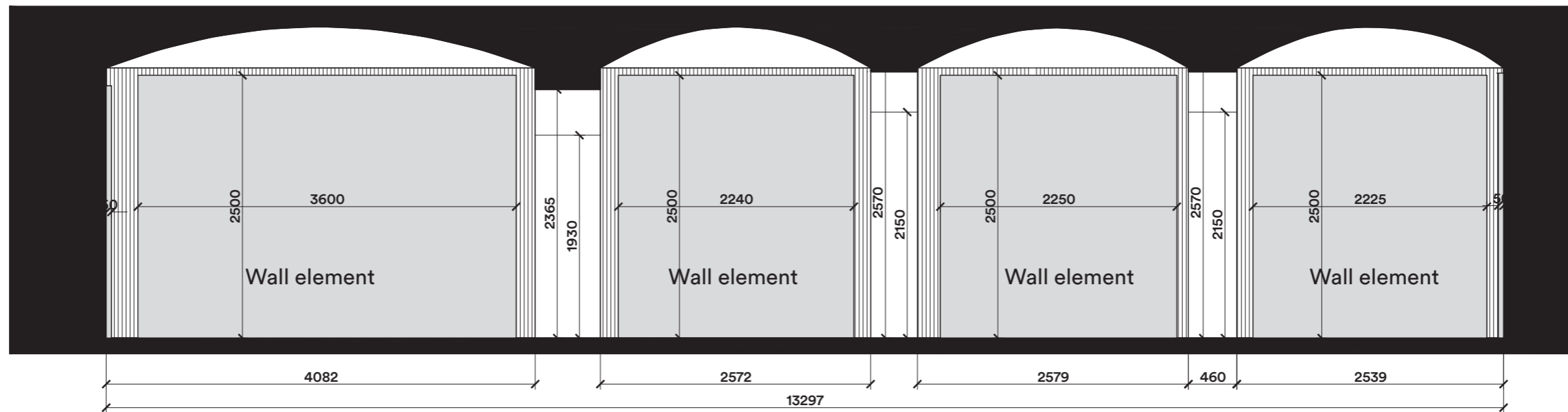
C2-C2



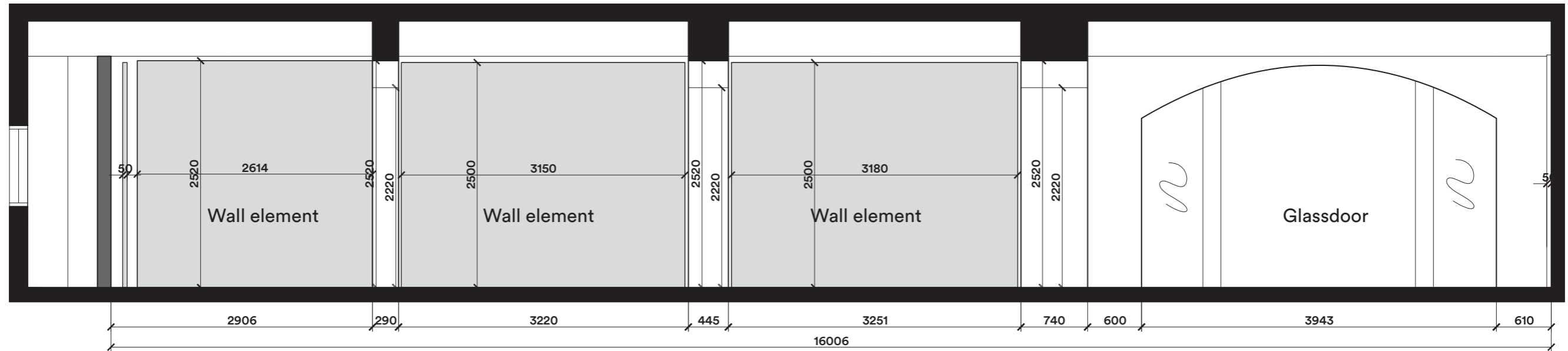
D1-D1



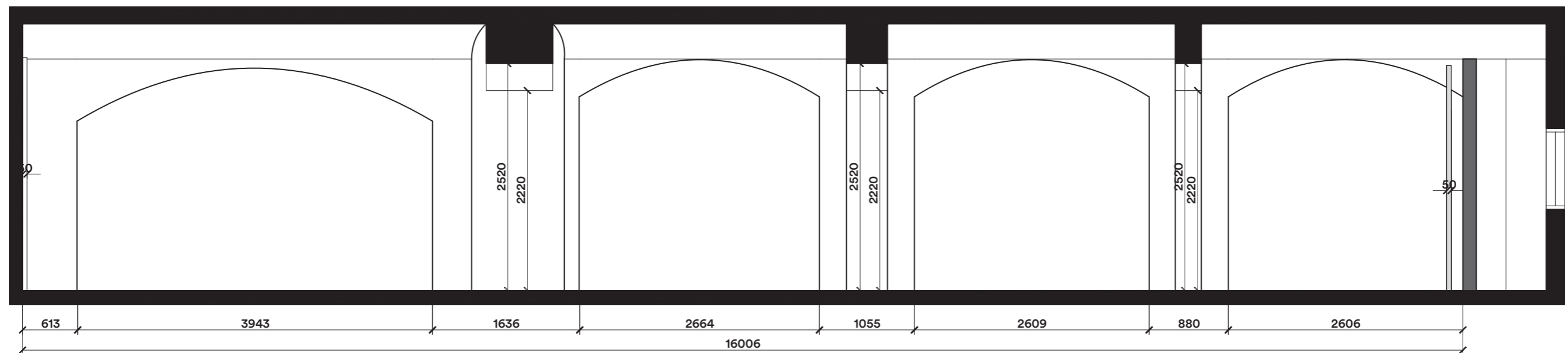
D2-D2



**E1-E1**

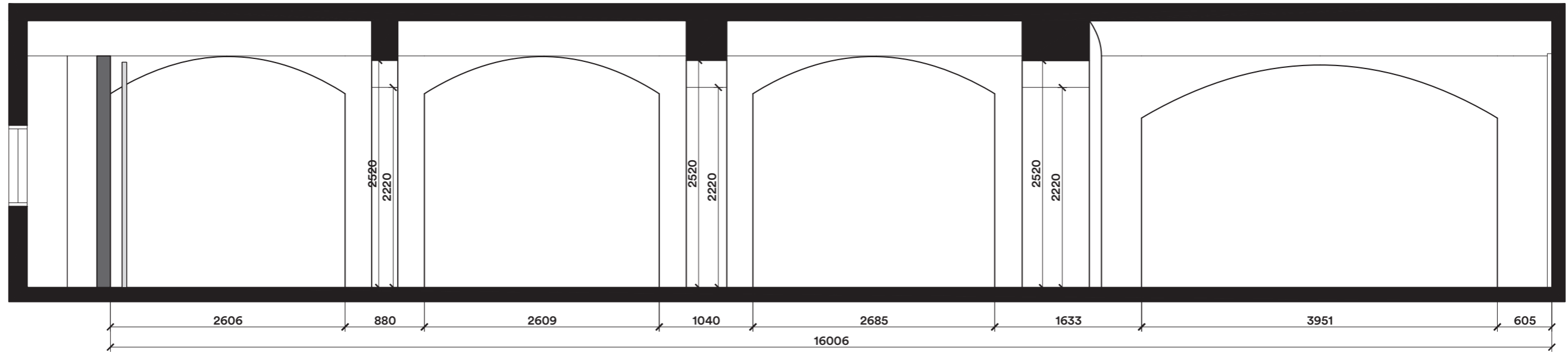


**E2-E2**

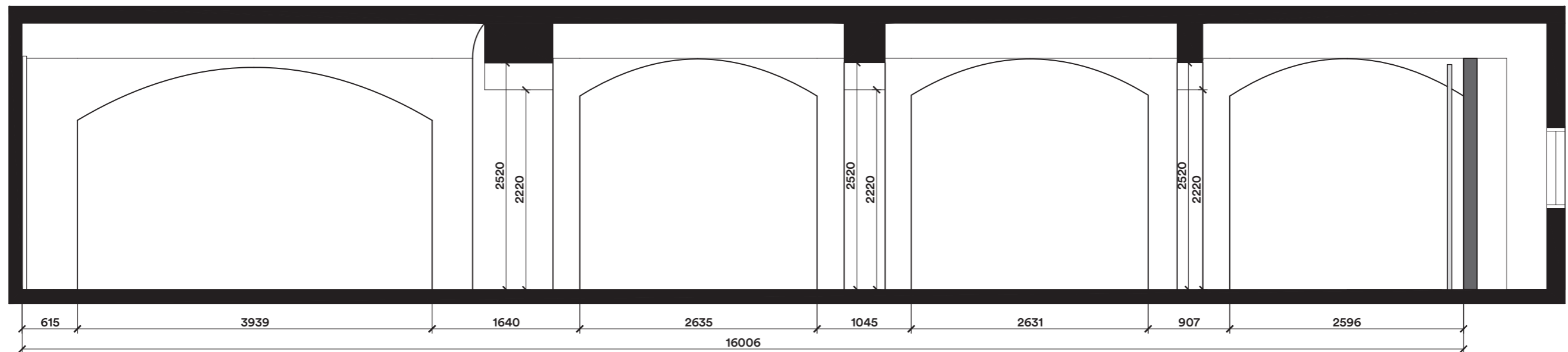




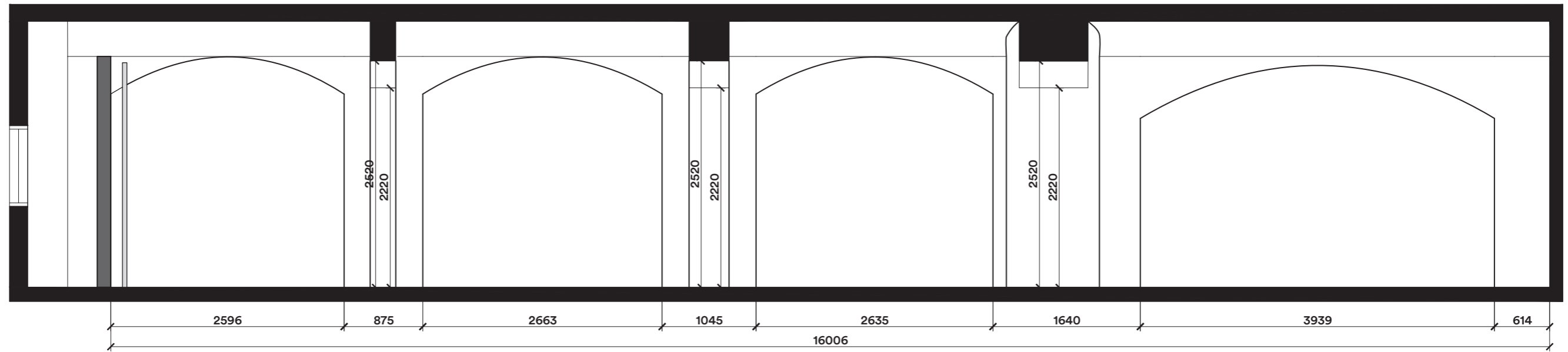
F1-F1



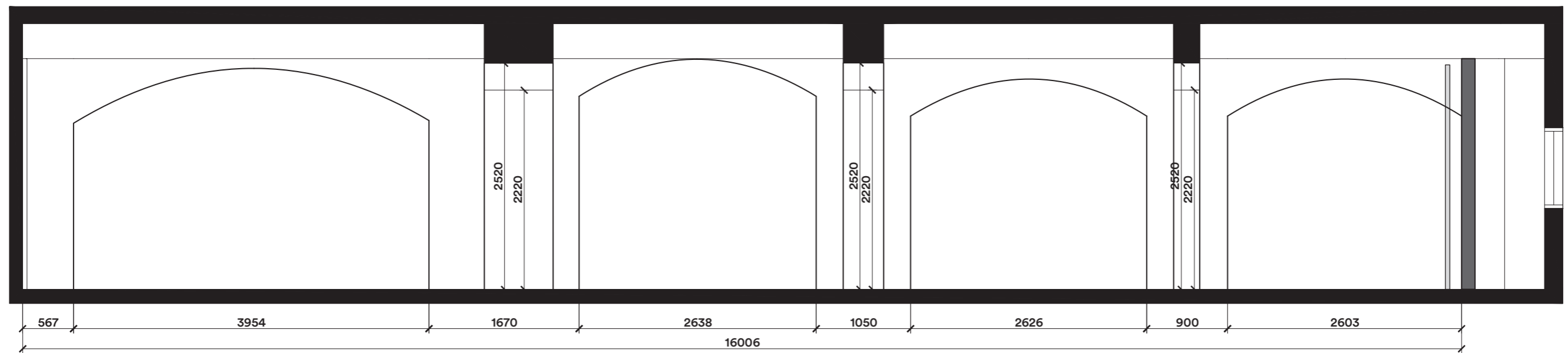
F2-F2



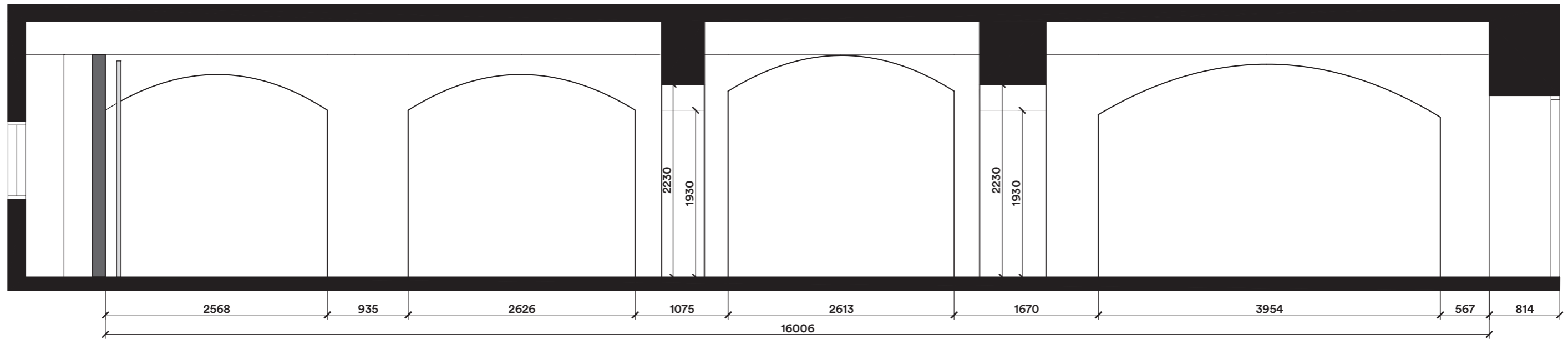
G1-G1



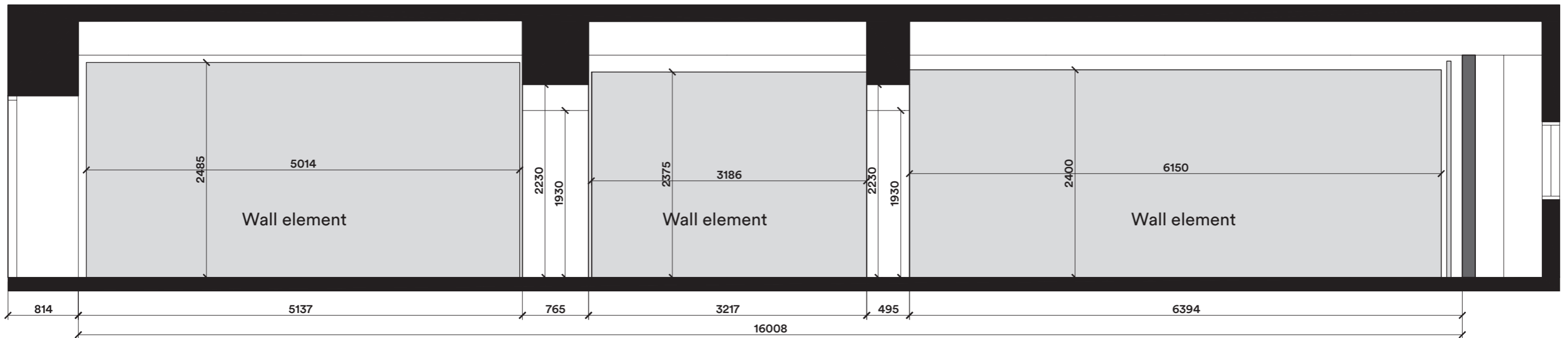
G2-G2



### H1-H1



### H2-H2



# designmuseum

Korkeavuorenkatu 23, 00130 Helsinki  
Tel. (09) 622 0540 Fax.(09) 622 05455  
info(at)designmuseum.fi